



# MORNINGTON YACHT CLUB



## GAZMAN

### LONG DISTANCE RACE SERIES

#### SPECIAL SAILING INSTRUCTIONS FOR DIVISIONS 1, 2 & 3

#### MARTHA COVE DESTINATION RACE

SATURDAY 13<sup>th</sup> FEBRUARY 2016

#### 1.0 GENERAL

The race shall be governed by the current versions of the *ISAF Racing Rules of Sailing* (Rule/s), the Special Regulations of Yachting Australia (YA), the Mornington Yacht Club (MYC) Notice of Race (NOR) and Sailing Instructions (SI's) and these Special Sailing Instructions (SSI's).

#### 2.0 ELIGIBILITY

All yachts shall comply with YA Special Regulations Part 1, Category 5 and the MYC NOR, except that the Etchells Class yachts shall comply with Category 6.

#### 3.0 ENTRIES

Race entry procedure will be in accordance with MYC SI's, Part 1 Clause 1.2 Entry and Sign On.

#### 4.0 RESULTS

Results will be calculated in accordance with MYC SI's, Part 1, Clauses 1.12 and 1.13

#### 5.0 STARTING PROCEDURE

The starting procedure shall be in accordance with MYC SI's Part 3, Clauses 3.5, 3.6 & 3.7. There will be two starts - one for Divisions 1, 2 & Etchells, the other for Division 3. All yachts shall start leaving the Start (S) mark to Starboard

#### 6.0 STARTING SEQUENCE TIMES

Divisions	Warning Signal
Divisions 1, 2 & Etchells	0955 hrs. (Single Red Light)
Division 3	1000 hrs. (Single Green Light)

**7.0 THE COURSE** There shall be three courses. Charts required for plotting courses shall be current AUS 143 and AUS 155.

#### 7.1 COURSE 1 – Divisions 1 and Etchells (Approx. 26.5 nm)

Start to buoy R1 (leave to Starboard) to beacon No. 21 South Channel (leave to Starboard) to beacon No. 19 South Channel (leave to Starboard) to No. 15 South Channel (leave to starboard) to No. 13 South Channel (round to port) to beacon No. 10 Sorrento Channel (leave to Starboard) to BYS No. 0 Start Line Buoy (round to Port) to beacon No. 10 Sorrento Channel (leave to Port) to beacon No. 19 South Channel (leave to Port) to beacon No. 21 South Channel (leave to Starboard) to Yellow Pile (leave to Port) to Finish at Safety Beach Sailing Club.

#### 7.2 COURSE 2 – Division 2 (Approx. 26nmn)

Start to buoy R1 (leave to Starboard) to beacon No. 21 South Channel (leave to Starboard) to beacon No. 19 South Channel (leave to Starboard) No. 10 Sorrento Channel (leave to Starboard) to BYS No. 0 Start Line Buoy (round to Port) to beacon No. 10 Sorrento Channel (leave to Port) to beacon No. 19 South Channel (leave to Port) to beacon No. 21 South Channel (leave to Starboard) to Yellow Pile (leave to Port) to Finish at Safety Beach Sailing Club.

**7.3 COURSE 3 – Division 3** (Approx.18 nm)

Start to buoy R1 (leave to Starboard) to beacon No. 21 South Channel (leave to Starboard) to beacon No. 19 South Channel (leave to Starboard) to # 15 South Channel (leave to Starboard) to #13 South Channel (round to Port) to # 15 South Channel (leave to Port) to beacon No. 19 South Channel (leave to Port) to beacon No. 21 South Channel (leave to Starboard) to Yellow Pile (leave to Port) to Finish at Safety Beach Sailing Club.

**7.4 MARKS OF THE COURSE** - Positions of the marks are as shown on charts Aus 158 & 143

<b>Approximate positions of buoys &amp; beacons:</b>	<b>LATITUDE</b>	<b>LONGITUDE</b>
Recreational Buoy No 1	38° 16.48' S	144° 58.37' E
No.21 South Channel Beacon	38° 19.50' S	144° 55.48' E
No.19 South Channel Beacon	38° 20.13' S	144° 54.47' E
No.15 South Channel Beacon	38° 20.02' S	144° 52.47' E
No.13 South Channel Beacon	38° 19.87' S	144° 51.54' E
No.10 Sorrento Channel Beacon	38° 21.34' S	144° 47.31' E
BYS No. 0 Start Line Buoy	38° 21.27' S	144° 46.57' E
Yellow Pile (at approach to SBSC Finishing Line)	38° 18.62' S	144° 59.22' E

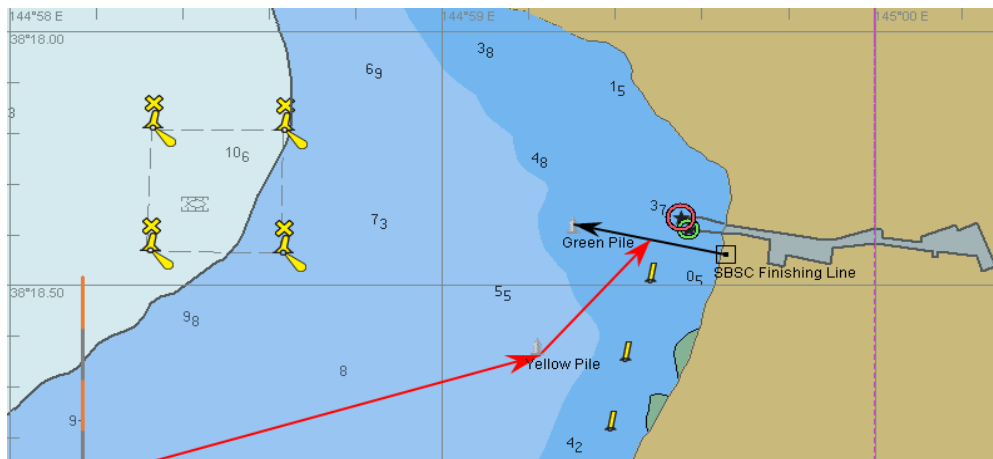
**Note:** Blairgowrie Yacht Squadron Start Line Buoy (BYS 0) is a yellow cone buoy with yellow cross, white light & marked number '0'.

**7.5 MARINE FARMS IN THE COURSE AREA**

The attention of competitors is drawn to Marine Farms within the course area. These may be floating or fixed structures with associated moorings that shall be avoided. Competitors should ensure they have current charts and confirm the location of Marine Farms. All Marine Farms in the course area shall be an obstruction.

**8.0 THE FINISH**

**8.1** The finishing line shall be between and the Green Lateral Mark Beacon (approx. 38° 18.373' S 144° 59.329' E) at the Port end and the centre line of Safety Beach Sailing Club Starting Box.



**8.2** Competitors shall take their own finishing times when crossing the finish line. The Green Lateral Mark Beacon shall be left to port.

**8.3** Finishing times shall be reported by telephone to the MYC Tower (03 5975 6805) at the first reasonable opportunity after finishing. Competitors may also SMS their Boat Name and Finishing Time (boat name - hh:mm:ss) to 0407 834 634

**9.0 AVOIDANCE OF COMMERCIAL SHIPPING IN PORT PHILLIP**

In Port Phillip, Commercial Shipping has right of way over pleasure craft. Professional fishing vessels engaged in fishing are, for the purpose of these Sailing Instructions, considered as commercial ships. All yachts shall keep clear of shipping in all Port Waters in accordance with Section 2.15 Part 1 of Harbour Master’s Directions “Small Vessels”. Any yacht that, in the opinion of the Race Committee, causes justifiable concern to a commercial ship shall be subject to disqualification by protest and may attract civil action.

## 10.0 SAFETY & COMMUNICATIONS

**10.1 Personal Floatation Devices:** The attention of competitors is drawn to the provisions of the Marine Act and Boating Regulations regarding the wearing of Personal Floatation Devices.

**10.2 Radio Watch MYC** *no longer recognises 27MHz as a valid radio band for meeting the obligations of these SI's*

**10.2.1 The Club:** A listening watch will be kept at the clubhouse on V.H.F. Ch. 16 & 73 The Club call sign is VZV 999. The MYC Tower/Race Office telephone, for use only if radio contact fails, is 03 5975 6805.

**10.2.2 The Competitor:** A boat shall conduct a radio check by calling the MYC Tower, no later than 5 minutes prior to her Warning Signal, on VHF Ch.73 and then keep a listening watch on VHF Ch. 73 at all times during the race. The Club may during the course of the race advise competitors of conditions that may adversely affect their safety. The Club reminds all boats that VHF CH 16 is not to be used for position reporting.

**10.3 Radio Schedules/Reporting:** All boats shall report to the MYC Tower on VHF Ch. 73 at the first reasonable opportunity after rounding or passing the scheduled marks of the course. Boats shall use the services of another boat to relay a report in adverse signal conditions. The co-operation of all boats in these circumstances is imperative.

**10.3.1** A boat having tried and failed to report by radio, including a relay via another boat, shall telephone the MYC Tower (03 5975 6805) to report.

**10.3.2** The scheduled marks of the course for reporting shall be:

- **Beacon No. 21 South Channel on both passes.**
- **BYS Start Line Buoy.**

**10.4 Radio Reporting:** All boats shall report to the MYC Tower any observed significant circumstances that may adversely affect the safety of any competitors in the race. E.g. *such items as sudden increases in wind strength over 30kts and/or increased sea state; a man overboard situation, including that of another boat; flotsam that may be hazardous to boats, etc, etc.*

Attention is also drawn to the Radio Reporting requirements of Clause 12, Time Limit.

## 11.0 PENALTIES

**11.1** A boat failing to conduct a radio check prior to her Warning Signal shall not be considered a starter and shall be scored Did Not Start (DNS) without a hearing. This amends rule 63.1

**11.2** A boat failing to report to the Tower at the scheduled mark/s of the course shall be scored Did Not Finish (DNF) without a hearing. This amends rule 63.1

## 12.0 TIME LIMIT

The time limit shall be sunset (20:22 AEDT) for all boats, regardless of their finishing position in relation to other boats in the race. Boats that do not finish within the time limit will be scored "Did not Finish" (DNF).

All boats expecting to arrive at the Safety Beach Finishing Line later than 1800hrs and boats returning to MYC after 1800hrs shall, for safety reasons, contact the MYC Tower by radio before 1745hrs and advise their current position and ETA. After 1800hrs a listening watch will only be kept until such times as the Race Officer deems that all boats are safe.

*Chris Jackson,*  
Rear Commodore

29<sup>th</sup> January 2016