



# SAILING INSTRUCTIONS

## Morningside Yacht Club 2022 - 2023 Sailing Season

### PART 1

#### GENERAL INSTRUCTIONS APPLYING TO ALL RACES

##### 1.1 Rules

---

- 1.1.1 All races conducted by Morningside Yacht Club (MYC) will be governed by the Rules as defined in the current **Racing Rules of Sailing** (RRS), the Special Regulations of Australian Sailing (AS), MYC Sailing Instructions (SI's or SSI's) and other Rules as defined in the MYC Notice or Race (NoR).
- 1.1.2 The Organising Authority shall be the Sailing Committee of MYC. The Race Committee shall be appointed by the Sailing Committee.

##### 1.2 Entry

---

- 1.2.1 A competitor, having met the eligibility requirements of the NoR Clauses 3 to 3.5, shall enter a race or a series of races on the first occasion they Sign On to compete in a race.

##### 1.3 Safety

---

- 1.3.1 All races shall be abandoned for the day if there is a GALE warning for the waters of Port Phillip issued by the Bureau of Meteorology and prior to the start of racing.
- 1.3.2 The Race Committee shall abandon a race if the Bureau of Meteorology issues a GALE warning for the waters of Port Phillip during the conduct of a race.
- 1.3.3 (a) The Race Committee may abandon a race if it considers that the sea state in the racing area is unsafe.
- (b) When the Bureau of Meteorology declares a Strong Wind Warning prior to or during a race, RRS 40.1 applies. The Race Committee shall fly the 'Y Flag' and advise competitors via the Communications Channel that each competitor shall wear a personal flotation device.
- 1.3.4 Keelboats, Trailable Yachts shall comply with the AS Special Regulations Part 1, Category 6.
- 1.3.5 Off the Beach Boats shall comply with AS Special Regulations - Part 2.
- 1.3.6 All boats competing in Long Distance Races and Night Races shall comply with AS Special Regulations – Part 1 Categories as detailed in the Special Sailing Instructions (SSI). Boats sailing in these races shall carry a minimum of two crew members.
- 1.3.7 The attention of competitors is drawn to the provisions of the Marine Act and Boating Regulations regarding the wearing of Personal Flotation Devices.
- 1.3.8 (a) The Race Communications Channel (Communications Channel) shall be VHF Ch 73. Special Sailing Instructions may declare an alternative Communications Channel for each event.
- (b) All boats that rate Category 6 or above shall keep a radio listening watch on the Communications Channel at all times while afloat.
- 1.3.9 Sign On and Sign Off
- 1.3.9.1 All Boats participating under Part 2 or Part 3 of these Sailing Instructions.
- (a) A boat shall Sign On at the Race Office at least 15 minutes before the scheduled start time of her first race for the day.
- (b) Boats that are not berthed at MYC shall Sign On by Telephoning the Race Office on (03)5975 6805 no more than 45 minutes before and at least 15 minutes before the scheduled start time of the first race of the day.
- (c) All boats shall Sign Off after racing within 1 hour of the finishing time of the last boat to complete the course of the last race of the day in their own division.
- (d) Boats that are not berthed at MYC shall Sign Off by Telephoning the Race Office on (03)5975 6805 or by calling MYC Tower on the Communications Channel within 1 hour of the finishing time of the last boat to complete the course of the day in their own division.
- (e) For Twilight Pursuit races and Fixed Mark Course races, the MYC Tower Officer will Sign Off boats as they Finish. This replaces the requirements of Clause 1.3.9.1(c) and 1.3.9.1(d).

- (f) Boats not Signing On or Signing Off may have the following penalty applied:
- (i) A boat that Finishes and failed to Sign On shall be scored her Finishing place plus three points without a hearing for the first race she sails on the day. The boat shall not score more than the score of the last boat that Finishes that race. This amends RRS 63.1
  - (ii) A boat that Finishes and failed to Sign Off shall be scored her Finishing place plus three points without a hearing for the last race she sails on the day. The boat shall not score more than the score of the last boat that Finishes that race. This amends RRS 63.1
- (g) If the race is abandoned, competitors shall advise the Tower Officer using the Communications Channel or by Telephoning (03)5975 6805 their intentions and that their boat and crew are safe. Once competing boats have returned to MYC they should Sign Off by contacting the Race Office on the Communications Channel or by Telephoning (03)5975 6805. MYC will endeavor to keep a listening watch for boats returning to other Clubs.
- (h) Boats that retire from the race shall advise the Tower Officer using the Communications Channel or by Telephoning (03)5975 6805 of their intentions and that their boat and crew are safe.

#### 1.3.9.2 All boats participating under Part 4 of these Sailing Instructions.

- (a) All boats shall Sign On before leaving the beach or the yard on the sheet provided for the days racing.
  - (b) All boats shall Sign Off having returned to the beach or the Yard on the sheet provided for the days racing. Sign Off shall occur within 30 minutes of returning ashore. Competitors shall Sign Off as either Finished or Retired.
  - (c) In addition to the Sign on ashore all boats shall complete an on water Sign On by sailing past the stern of the Start Boat on Starboard tack and hailing the boat's sail number which will be recorded by the Start Crew. It is the responsibility of the competitor to ensure they have been recorded by the Start Crew.
  - (d) Boats not Signing On or Signing Off may have the following penalty applied:
    - (i) A boat that Finishes and failed to Sign On shall be scored her Finishing place plus three points without a hearing for the first race she sails on the day. The boat shall not score more than the score of the last boat that Finishes that race. This amends RRS 63.1
    - (ii) A boat that Finishes and failed to Sign Off shall be scored her Finishing place plus three points without a hearing for the last race she sails on the day. The boat shall not score more than the score of the last boat that Finishes that race. This amends RRS 63.1
- 1.3.10 All boats should report to the MYC Tower any observed significant circumstances that may adversely affect the safety of any competitors in the race. *e.g. items as sudden increases in wind strength over 33kts and/or increased sea state; a man overboard situation, including that of another boat; flotsam that may be hazardous to boats, etc.*
- 1.3.11 Competitors shall report all incidents that have resulted in injury or are of an adverse nature that could affect the safety of the boat or crew while sailing, *e.g. collision with another boat, man overboard or any similar event.* An Incident Declaration Form shall be lodged with the Club at the first reasonable opportunity by all boats involved in the incident detailing the nature of the event, any injury to crew or damage to the boats. Incident Declaration Forms will be available from and shall be lodged at the Race Office.

## 1.4 Notices to Competitors

---

Notices to Competitors shall be posted on the Official Notice Board located on the ground floor of the Clubhouse and may also be displayed on the MYC website <https://www.morningtonyc.net.au/> .

## 1.5 Changes to Sailing Instructions

---

Any change to Sailing Instructions shall be posted on the Official Notice Board at least one hour before the advertised start time of any race they affect and may also be displayed on the MYC website [https://www.morningtonyc.net.au](https://www.morningtonyc.net.au/)

## 1.6 Signals made ashore

---

- 1.6.1 Flag Signals made ashore will be displayed from the yardarm of the MYC mast, or in the case of light semaphore, from the light battery on the MYC Tower. A yellow Numeral Board displayed below the light battery prior to the Warning Signal shall indicate the course number. *This amends RRS 26*
- 1.6.2 Flag 'AP' with two sound signals (one sound when lowered) means "The race is postponed. The Warning Signal will be made not less than 30 minutes after AP is lowered". *This amends RRS RACE SIGNALS – Postponement Signals AP.*
- 1.6.3 Flag 'I' shall be flown for all Tower Light Start Races.
- 1.6.4 Flag 'Q' with one sound signal means races shall start from the MYC Tower. (See Part 3: Additional Instructions for Tower Light Starts & Fixed Mark Courses).
- It is the intent of 1.6.4 to be used for the following reasons:*
- All boats in a particular division cannot be launched or boarded due to weather conditions.
  - The wind strength is too high
  - The wind strength is too low
  - An unforeseen problem with Race Management
  - The Race Committee determines that the race shall be sailed from a Tower Light Start
- 1.6.5 This clause not in effect.

- 1.6.6 Flag 'S' and Board 'S' together with two sound signals shall indicate a shortened course. A Numeral Board, adjacent to the Board 'S', shall indicate the number of the Division whose course is shortened. If no numeral board is displayed the course for all Divisions is shortened.

Keelboat Division	Numeral Board 1
Trailable Yacht Division	Numeral Board 3

*This amends RRS 32.2.*

- 1.6.7 This clause not in effect.
- 1.6.8 Flag 'Y' with one sound signal means Personal Flotation Devices shall be worn by all crewmembers and RRS 40.1 is in effect.
- 1.6.9 Flag 'L' with one sound means a Notice to Competitors has been posted on the Official Notice Board.

## **1.7 Committee Vessels**

---

All Race Committee Boats shall fly the MYC Burgee.

## **1.8 Schedule of Races**

---

- 1.8.1 The Schedule of Races shall be the calendar as displayed on the MYC website <https://www.morningtonyc.net.au/>. All races shall be numbered in the order by which they are sailed.
- 1.8.2 Any changes to the Schedule of Races shall be posted on the Official Notice Board at least 5 days before the date of the event(s) affected by the change and shall also be displayed on the MYC website <https://www.morningtonyc.net.au/>

### **1.8.3 Saturday Races** shall be sailed as detailed below:

---

- 1.8.3.1 The Aggregate Series races for Keelboats & Trailable Yachts shall be sailed in accordance with Part 2 or Part 3 of these Sailing Instructions.
- 1.8.3.2 Standalone Non Series Race shall be sailed in accordance with Part 2 or Part 3 of these Sailing Instructions.
- 1.8.3.3 The Championship Series races for Keelboats & Trailable Yachts shall be sailed in accordance with Part 2 of these SI. Those races that are abandoned may be rescheduled.
- 1.8.3.4 This clause not in effect.
- 1.8.3.5 The Long Distance Race Series shall be sailed under Special Sailing Instructions.
- 1.8.3.6 This clause not in effect.
- 1.8.3.7 If a Flag Officer's Trophy race is abandoned that Flag Officer's Trophy may be rescheduled.

### **1.8.4 Sunday Races** shall be sailed as detailed below:

---

- 1.8.4.1 Aggregate and Championship Series races for Off the Beach boats shall be sailed in accordance with Part 4 of these Sailing Instructions. Championship Series races that are abandoned may be rescheduled.
- 1.8.4.2 Trophy Races for Off the Beach boats shall be sailed in accordance with Part 4 of these Sailing Instructions.
- 1.8.4.3 If a Flag Officer's Trophy race is abandoned that Flag Officer's Trophy may be rescheduled.

### **1.8.5 Thursday Races** shall be sailed as detailed below:

---

- 1.8.5.1 Twilight Social Pursuit Series races shall be sailed in accordance with Part 3 of these Sailing Instructions and sailed as 3 individual Series and an overall Season's Series. These series shall be combined division pursuit races with start time offsets performance adjusted after each race.
- 1.8.5.2 Lady Skippers' races shall be sailed as part of the Twilight Social Pursuit Series in accordance with Part 3 of these Sailing Instructions. A Lady Skippers' Trophy shall be awarded for each race. Races that are abandoned may be re-scheduled. The nominated Lady Skipper shall be named on the Sign On sheet for each race and shall helm the boat for the entire race. Failure to comply will incur a *Disqualification* (DSQ) for the boat without a hearing. *This amends RRS 63.1, A4 and A5.*

## 1.9 Class Flags

---

Class flags shall be:

Keelboat Division	Code Flag 'K'
Trailable Yacht Division	Code Flag 'R'
Off The Beach Boats	Code Flag 'D'
Optimists Open	Class Flag 'Φ' White
Optimists Green	Class Flag 'Φ' Green

## 1.10 Areas that are Obstructions

---

- 1.10.1 The Harbour shall be an Obstruction while racing.
- 1.10.2 The Harbour Obstruction shall be the area of water bounded by Mornington Pier; the outer Speed Restriction Pile, the Harbour Limit Clearance Buoy adjacent to the finishing line, the inner Speed Restriction Pile and the Public Boat Launching Ramp. See Appendix B.
- 1.10.3 Boats should not pass between the yellow Outer Speed Restriction Pile laid NE of the Mornington Pier and the pier at any time. Respecting the rights of the users of the pier is paramount.

## 1.11 Protests/Mediation

---

- 1.11.1 Protests shall be in writing and lodged at the Race Office in accordance with *RRS 61*. Protest Forms are available at the Race Office.
- 1.11.2 Mediation will be considered an appropriate precursor to a full protest hearing.
- 1.11.3 The Notice of a protest hearing will be posted on the Official Notice Board prior to 1500 hrs on the first Wednesday after the race, informing competitors the date, time and location of the hearing to which they are parties or named witnesses.

## 1.12 Scoring

---

- 1.12.1 The Low Points scoring system of the RRS Appendix A will apply for all events. RRS A5.3 shall apply.
- 1.12.2 If a boat completes less than 3 races in a series, she shall have no series result in that series.
- 1.12.3 If a boat completes only 3 races, all results shall count. When (4) through (6) races in a series have been completed, a boat's series score will be the total of her race scores excluding her worst score. When (7) through (11) races have been completed, a boat's series score will be the total of her race scores excluding her 2 worst scores. When (12) through (15) races have been completed, a boat's series score will be the total of her scores excluding her 3 worst scores. When (16) through (19) races have been completed, a boat's series score will be the total of her scores excluding her 4 worst scores. When 20 or more races have been completed, a boat's series score will be the total of her scores excluding her 5 worst scores. This amends RRS A2.
- 1.12.4 This clause not in effect
- 1.12.5 (a) Average points may be awarded for a race that is part of the Aggregate Series, Championship Series, Class Race Series and Long Distance Series events where a boat is:
- Participating in its Class State, National, World Championships or other events of equivalent status as determined by the Race Committee.
  - Selected by the Sailing Committee to represent the Club in a teams' event.
- (b) Average points may also be awarded for a race that is part of the Aggregate Series, Club Championship Series and Class Race Series event to a boat whose skipper is:
- An MYC member who is an Australian Sailing qualified Race Officer and is officiating at a State, National or International Championship regatta in which the Club is a part of the Race Management team.
  - An MYC member that the Sailing Committee has rostered to officiate at a State, National or International Championship regatta in which the Club is a part of the Race Management team.
- (c) To request average points, the skipper of the yacht must:
- Advise the Race Committee in writing at least 7 days prior to the event, stating the Club event for which they are requesting average points, and the event in which they will be participating. Application forms are available at the Race Office.
  - Only make requests for a maximum of three races in one season.
- (d) Average points will be calculated as the average of the total points that the boat has received for all races in the series.

1.12.6 The results will be calculated according to the following table:

RESULTS MATRIX	CLASSES (Divisions)			
	Keelboats (1)	Trailable Yachts (3)	OTB's (10)	Optimists (11)
Aggregate Series	PHS	PHS	PHS by YS	PHS
Championship Series	AMS & PHS	CBH & PHS	ET by YS	ET
Trophy Races	PHS	PHS	PHS by YS	PHS
Long Distance Race Series	AMS & PHS	CBH & PHS		
Class Race Series			ET by YS	
Thursday Social Pursuit Series	Special $\frac{1}{8}\frac{1}{8}\frac{1}{8}$ PHS	Special $\frac{1}{8}\frac{1}{8}\frac{1}{8}$ PHS		

AMS=Australian Measurement System, CBH = Class Based Handicap, ET = Elapsed Time, PHS = Individual Performance Handicap, YS = Yachting Victoria Yardstick,  $\frac{1}{8}\frac{1}{8}\frac{1}{8}$  PHS = Start time offset changes based on the boat's performance in the previous race.

- 1.12.7 A boat shall provide regular members of its crew for Race Crew duty when rostered to do so on a particular race day. The boat will be scored 'Duty' (DUT), this is a score that is the average of the total points that the boat has received for all races in the series. The boat may sail in the race provided it meets this duty crew obligation and will then be scored in the normal manner. Boats not meeting this obligation shall be scored DNE without a hearing. *This amends RRS 63.1, A4 and A5.*
- 1.12.8 Keelboats that intend to race in the Championship Series and/or Long Distance Race Series shall hold a current AMS Rating as listed on the Yacht Racing Services Association website [[raceyachts.org](http://raceyachts.org)] under 'AMS listings' prior to the first race of the series in which her AMS handicap is to be applied.
- 1.12.9 The Handicapper shall allocate handicaps to all boats at the commencement of the season and may revise such handicaps from time to time as a result of a boat's performance, changes to its hull or sails and the composition of the crew. Skippers of boats making significant changes to hull, sails and/or crew during the season shall advise the handicapper in writing prior to competing in their next race.
- 1.12.10 A Pursuit Race that has a division/s of boats abandoned due to adverse weather conditions shall become a non series race.

### 1.13 Starters, Race Results, Trophies and Prizes

---

- 1.13.1 Two starters in each division or class shall constitute a race, except that for Trophy Races where all divisions or classes are combined two starters shall constitute a race.
- 1.13.2 Race Results shall be displayed on the MYC website <https://www.morningtonyc.net.au/> and may also be displayed for a limited time on the notice board adjacent to the Race Office door. Results may also be announced in the Clubhouse.
- 1.13.3 Trophies and Prizes shall be awarded in accordance with MYC NoR Clause 7.
- 1.13.4 All race and series results shall be provisional until the Trophies and Prizes are presented.

### 1.14 Emergency Procedures

---

In an emergency the MYC Rescue Plan shall be activated.

The Rescue Plan is detailed in the Policy and Procedures Manual, Sailing Portfolio which can be viewed on the MYC website: <https://www.morningtonyc.net.au> .

## **PART 2**

### **ADDITIONAL INSTRUCTIONS FOR ON WATER STARTS.**

#### **2.1 Marks**

---

- 2.1.1 The laid marks of the courses shall be Yellow cylindrical inflatable buoys numbered 1, 2, 3, 4 & 5.
- 2.1.2 The Start and Finish marks shall be Orange cylindrical inflatable buoys.
- 2.1.3 The Fixed Marks shall be as detailed in SI Clause 3.3

#### **2.2 Courses**

---

- 2.2.1 On Water Start courses shall be sailed in accordance with Appendix A.
- 2.2.2 The course number shall be displayed on the Race Committee Boat.

#### **2.3 The Start**

---

- 2.3.1 Races will be started in accordance with RRS 26.
- 2.3.2 The starting line will be between a staff displaying an orange flag on the Race Committee Boat at the starboard end and the Port end starting mark.
- 2.3.3 A crowding buoy may be laid off the transom of the Race Committee Boat and shall be considered part of that vessel.
- 2.3.4 Boats are requested to keep clear of the Start line before their own Warning Signal.
- 2.3.5 A boat that starts later than 15 minutes after her division start time shall be scored *Did Not Start* (DNS) without a hearing. *This amends RRS 35, 63.1, A4 & A5*

#### **2.4 Shortening the Course**

---

- 2.4.1 The course shall be shortened in accordance with RRS 32.
- 2.4.2 Courses using fixed marks shall be shortened in accordance with SI clause 3.8.

#### **2.5 Change of course after the Start**

---

A change of course shall be signaled in accordance with RRS 33.

#### **2.6 The Finish**

---

- 2.6.1 The finishing line for laid courses shall be between a staff displaying a blue flag on a Race Committee Boat and the Finishing mark.
- 2.6.2 A boat that re-crosses the finishing line after she has Finished shall be disqualified (DSQ) without a hearing. *This amends RRS 63.1, A4 and A5*
- 2.6.3 The finishing line for races using fixed marks shall be as described in SI Clause 3.9

#### **2.7 Time Limits**

---

##### **2.7.1 Keelboats & Trailable Yachts**

The time limit for the first boat in each division to sail the course and finish is 3 hours. Boats failing to finish within the time limit or within 90 minutes of the finishing time of the first boat of her division, whichever is later, will be scored *Did Not Finish* (DNF) without a hearing. *This amends RRS 35, 63.1, A4 & A5.*

- 2.7.2 This clause not in effect.

## PART 3

### ADDITIONAL INSTRUCTIONS FOR TOWER LIGHT STARTS & FIXED MARK COURSES

#### 3.1 Tower Light Starts

---

- 3.1.1 Except for Long Distance Races, Courses to be sailed will be indicated by a course Numeral Board/s displayed on the MYC Tower adjacent to the Light Semaphore Signals.
- 3.1.2 Thursday Twilight Pursuit Series Races shall be sailed with main and head sails only.

#### 3.2 Propulsion

---

- 3.2.1 For Twilight Pursuit Races, a boat may use its motor, paddles or oars for propulsion up to one minute prior to her scheduled start time.
- 3.2.2 A boat observed by the Race Officer to have broken SI sub-clause 3.2.1 shall be Disqualified (DSQ) without a hearing. *This amends RRS 63.1*

#### 3.3 Marks

---

- 3.3.1 Marks A, B, C, D, E, Finish and Start will be yellow spar buoys. The Starting Line Clearance Mark and the Harbour Limit Clearance Mark will be smaller yellow spar buoys. The spar buoys may be lit by a white light.
- 3.3.2 Buoys will be permanently anchored at the following locations.

MARK	BEARING	DISTANCE	LATITUDE	LONGITUDE
A	035.68° M	1.80 nm	38° 11.30' S	145° 03.60' E
B	340.75° M	1.99 nm	38° 10.54' S	145° 01.59' E
C	308.00° M.	2.00 nm	38° 11.00' S	145° 00.28' E
D	270.09° M	1.73 nm	38° 12.17' S	144° 59.78' E
E	210.00° M	1.75 nm	38° 13.82 S	145° 00.44 E
Start (S)	-	-	38° 12.52' S	145° 01.92' E
Finish (F)	-	-	38° 12.64' S	145° 02.35' E

*Bearings and distances are from the Start Mark (S)*

#### 3.4 Courses

---

All Fixed Mark Courses shall be sailed in accordance with Appendix A.

#### 3.5 The Start

---

- 3.5.1 The Starting line shall be a line between the black line on the yellow disc on the face of the MYC Tower and the MYC Start (S) Mark.
- 3.5.2 A Clearance Mark may be laid adjacent to the Starting line and the Mornington pier. This Mark may not be on the Start line.
- After the Preparatory signal, and before correctly Starting, any yacht touching the Clearance Mark or passing from the pre-start side of the Starting line to the course side between the Clearance Mark and the MYC Tower shall return to the pre-start side of the Starting line by sailing between the Clearance Mark and the MYC Tower. Boats crossing the Starting line in this manner shall be deemed NOT to have infringed RRS 30.1. This amends RRS 30.
- 3.5.3 RRS 30.1 (I Flag Rule) shall apply to all Tower Light Start Races.
- 3.5.4 Prior to Starting, boats wishing to cross the starting line from the course side may do so by sailing between the Clearance Mark and the Tower. Boats crossing the Starting line in this manner shall be deemed NOT to have infringed RRS 30.1. *This amends RRS 30.1*
- 3.5.5 In Pursuit Races and prior to starting all yachts shall keep well clear of the starting line except during the one minute before their scheduled starting time.
- 3.5.6 A boat that starts later than 15 minutes after her division start time shall be scored *Did Not Start* (DNS) without a hearing. *This amends RRS 35, 63.1, A4 & A5*
- 3.5.7 All courses with MYC A or B as the first mark shall Start leaving the Start mark to Port. All other courses shall Start leaving the Start mark to Starboard.

### 3.6 Starting Procedure

---

- 3.6.1 Each Division shall be identified by a coloured Division Light(s).

DIVISIONS	WARNING SIGNAL
'Combined Division' (All Divisions combined)	Red & Green lights together.
Keelboat Division	Single Red light.
Trailable Yacht Division	Single Green light.

3.6.2 **Warning Signal**

Five minutes before a Division start time, the Division Light(s) will go on and one sound may be made.

3.6.3 **Preparatory Signal**

Four minutes before a Division start time the White Light will go on and one sound may be made. Except that, Australian Sailing prescribes that when handicap (pursuit) starts apply a boat's preparatory signal is deemed made four minutes before the boat's starting time.

3.6.4 **One-minute Signal**

One minute before a Division start time the White Light will go off and one sound may be made.

3.6.5 **Starting Signal**

The start for a Division will be indicated by the removal of the Division Light(s) and one sound may be made. The Warning Signal for any succeeding Division start will then be displayed.

- 3.6.6 This starting procedure amends RRS 26.

### 3.7 Recalls

---

- 3.7.1 No recall signals will be made for Tower Light Start Races. *This amends RRS 29.* Boats crossing the start line before their division starting time and failing to return to the pre-start side of the starting line to Start will be scored (OCS) without a hearing. *This amends RRS 35, 63.1, A4 & A5*

- 3.7.2 For all Tower Light Start races the tower shall broadcast the OCS boats as soon as practical after the Starting Signal is made for each division or a boat's scheduled start time. Competitors shall monitor the Communications Channel to receive the names and/or sail numbers of those boats identified as OCS. *This amends RRS 29.*

### 3.8 Shortening the Course

---

- 3.8.1 Courses may be shortened at the 'S' mark from the Tower. The Finishing line shall be a line between the black line on a yellow disc on the face of the MYC Tower and the MYC 'S' mark. *This amends RRS 32.2.*

- 3.8.2 Flag 'S' and Board 'S' together with two sound signals shall indicate a shortened course. A Numeral Board, adjacent to the Board 'S', shall indicate the number of the division whose course is shortened. If no numeral board is displayed the course for all divisions is shortened. *This amends RRS 32.2.*

- 3.8.3 Competitors are reminded of their obligation to cross the Shortened Course Finish line from the direction of the last mark. See Appendix A3.6

### 3.9 The Finish

---

- 3.9.1 The Finishing line shall be that part of a line between the black line on a yellow disc on the face of the MYC Tower and the MYC Finishing Mark at the Port end, which is outside the harbour limits. See Appendix B

- 3.9.2 Boats shall leave the Harbour Limit Clearance Buoy to Starboard. See Appendix B. Boats breaching this Sub-clause will be disqualified (DSQ) without a hearing. *This amends RRS 63.1, A4 and A5*

- 3.9.3 A boat that re-crosses the finishing line between the Harbour Limit Clearance Buoy and the Finish mark after she has Finished shall be disqualified (DSQ) without a hearing. See Appendix B. *This amends RRS 63.1, A4 and A5*

### 3.10 Time Limit

---

- 3.10.1 Except for Tower Pursuit Races and events with Special Sailing Instructions, the time limit for the first boat in each Division to sail the course and Finish is 3 hours. Boats failing to Finish within the time limit or within 90 minutes of the finishing time of the first boat of her Division, whichever is later, will be scored *Did Not Finish* (DNF) without a hearing. *This amends RRS 35, 63.1, A4 & A5.*

- 3.10.2 The time limit for Twilight Pursuit Races shall be Sunset on the day of racing. Boats failing to Finish within the time limit will be scored *Did Not Finish* (DNF) without a hearing. *This amends RRS 35, 63.1, A4 & A5.*

- 3.10.3 Special Sailing Instructions shall detail time limits for each event.



## **PART 4**

### **ADDITIONAL INSTRUCTIONS FOR SUNDAY OFF THE BEACH COURSES**

#### **4.1 Marks**

---

- 4.1.1 Marks of the course shall be Yellow or Orange cylindrical inflatable buoys.
- 4.1.2 The Start and Finish marks shall be Orange or Red cylindrical inflatable buoys.

#### **4.2 Courses**

---

- 4.2.1 The courses shall be sailed in accordance with Appendix A.
- 4.2.2 The course number shall be displayed on the Race Committee Boat.

#### **4.3 The Start**

---

- 4.3.1 Races will be started in accordance with RRS 26
- 4.3.2 The starting line will be between a staff displaying an orange flag on the Race Committee boat at the Starboard end and the Port end starting mark.
- 4.3.3 A crowding buoy may be laid off the transom of the Race Committee boat and shall be considered part of that vessel.
- 4.3.4 Boats are requested to keep clear of the starting line before their own Warning Signal.
- 4.3.5 A boat that starts later than 15 minutes after her fleet start time shall be scored *Did Not Start* (DNS) without a hearing. *This amends RRS 35, 63.1, A4 & A5*

#### **4.4 Change of course after the start**

---

A change of course shall be signaled in accordance with RRS 33.

#### **4.5 The Finish**

---

The finishing line will be between a staff displaying a blue flag on a Race Committee Boat and the Finishing mark.

#### **4.6 Time Limit**

---

The time limit for the first boat of her fleet to sail the course and finish is 2 hours. Boats failing to finish within the time limit or within 30 minutes of the finishing time of the first boat in her fleet, whichever is later, will be scored *Did Not Finish* (DNF) without a hearing. *This amends RRS 35, 63.1, A4 & A5.*

## **PART 5**

### **SPECIAL SAILING INSTRUCTIONS**

#### **5.1 Special sailing instructions**

---

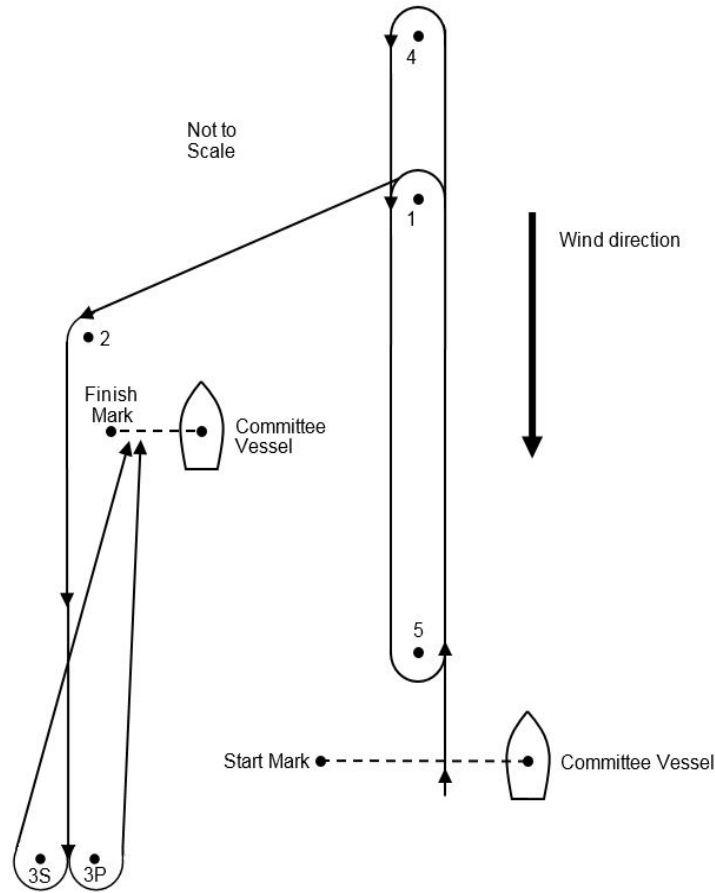
- 5.1.1 Special Sailing Instructions (SSI) will be issued for all non-standard events not covered by Parts 1 - 4. Instructions shall be available at the Race Office and may be published on the MYC website <https://www.morningtonyc.net.au/> no less than 1 hour prior to the start of the race.

# APPENDIX A

## COURSE CONFIGURATIONS

### A0 Course 0

#### A0.1 Course Diagram



Marks to be left to Port except 3S which shall be left to Starboard. If only one gate mark is laid it shall be left to Port.

#### A0.2 Class, Code Flag and Course

CLASS	CODE FLAG	COURSE
Off the Beach	D	Start - 4 - 5 - 4 - 5 - 1 - 2 - Gate 3(s) or 3(p) - Finish
Optimists	'Φ' White	Start - 1 - 2 - Gate 3(s) or 3(p) - Finish

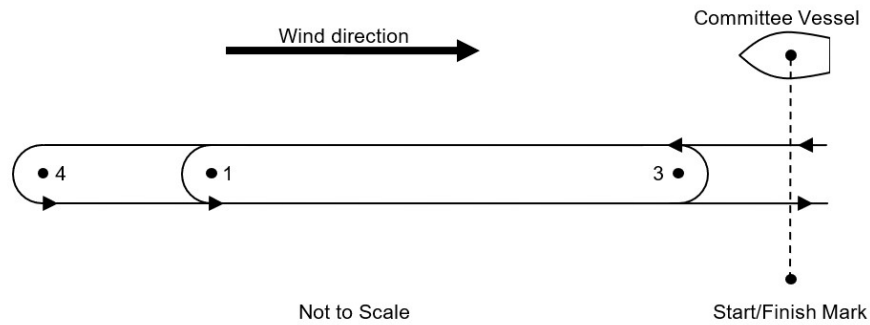
'Φ White' Code flag is the Optimist OPEN FLEET Class Flag.

# APPENDIX A

## COURSE CONFIGURATIONS

### A1 Course 1

#### A1.1 Course Diagram



All Rounding marks to be left to Port.

#### A1.2 Classes, Code Flags and Courses

CLASS	CODE FLAG	COURSE
Keelboats	'K'	Start - 1 - 3 - 1 - 3 - 1 - Finish
Trailable Yachts	'R'	Start - 1 - 3 - 1 - Finish
Off The Beach	'D'	Start - 4 - 3 - 4 - Finish
Optimists	'Φ White'	Start - 1 - 3 - 1 - Finish
Optimists	'Φ Green'	Start - 1 - Finish

'Φ White' Code flag is the Optimist OPEN FLEET Class Flag.

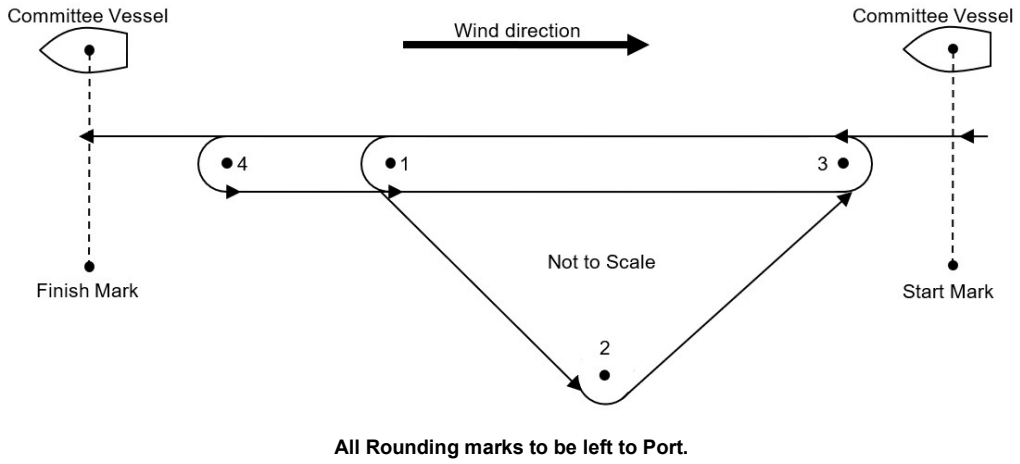
'Φ Green' Code flag is the Optimist GREEN FLEET Class Flag.

# APPENDIX A

## COURSE CONFIGURATIONS

### A2 Course 2

#### A2.1 Course Diagram



#### A2.2 Classes, Code Flags and Courses

CLASS	CODE FLAG	COURSE
Keelboats	'K'	Start - 1 - 2 - 3 - 4 - 3 - Finish
Trailable Yachts	'R'	Start - 1 - 2 - 3 - 1 - 3 - Finish
Off The Beach	'D'	Start - 4 - 3 - Finish
Optimists	'Φ' White	Start - 1 - 3 - Finish

'Φ White' Code flag is the Optimist OPEN FLEET Class Flag.

# APPENDIX A

## COURSE CONFIGURATIONS

### A3 Fixed Mark Courses

#### A3.1 Starting – On Water Starts

The Start procedure shall be as described in SI Clause 2.3

#### A3.2 Starting – Tower Starts

The Start procedure including the Hand of the Start mark during Starting shall be as described in SI Clause 3.5

#### A3.3 Course details

No.	COURSE	'S' Mark whilst Starting	Rounding Marks
3	Start - E(s) - D(s) - S(s) - E(s) - S(p) - A(s) - Finish	Starboard	< As defined
4	Start - B(p) - C(p) - B(s) - S(s) - B(s) - Finish	Port	< As defined
5	Start - D(s) - C(s) - S(s) - (Ds) - B(s) - Finish	Starboard	Starboard
6	Start - E(s) - D(s) - S(p) - C(s) - Finish	Starboard	< As defined
7	Start - A(p) - B(p) - S(s) - B(s) - A(s) - Finish	Port	< As defined
8	Start - D(s) - C(s) - S(s) - C(s) - B(s) - Finish	Starboard	Starboard
9	Start - A(p) - B(p) - Finish	Port	Port
10	Start - A(p) - C(p) - Finish	Port	Port
11	Start - B(s) - A(s) - Finish	Port	Starboard
12	Start - B(p) - C(p) - Finish	Port	Port
13	Start - D(s) - C(s) - Finish	Starboard	Starboard
14	Start - E(s) - D(s) - Finish	Starboard	Starboard

\*\* Note regarding 'Rounding Marks' column and the '< as defined' notation:

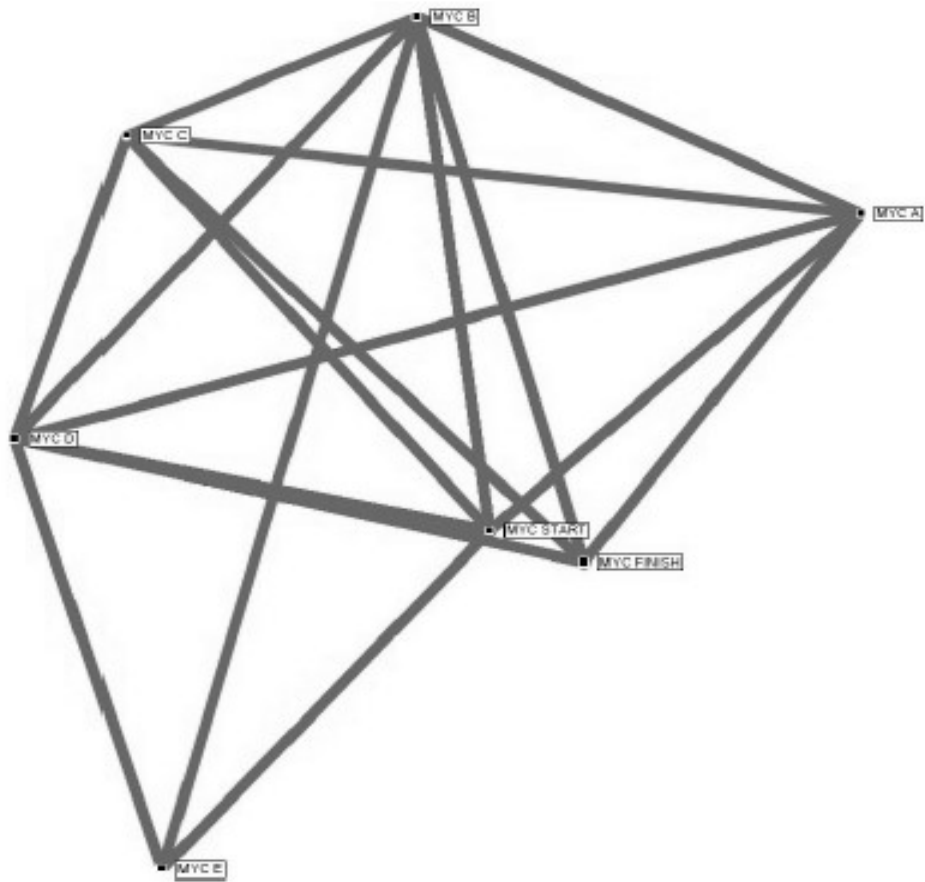
(p) = leave mark to Port

(s) = leave mark to Starboard

#### A3.4 Course leg lengths and bearings

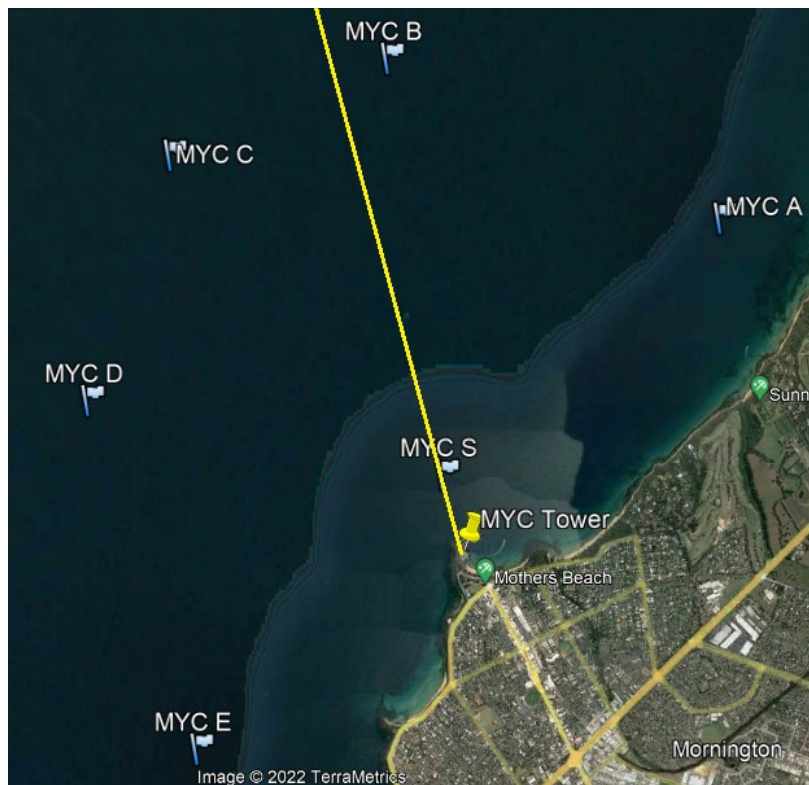
Leg	Bearing	Length
Start - A	036.00° M	1.80 nm
Start - B	340.00° M	2.00 nm
Start - C	308.00° M	2.00 nm
Start - D	270.00° M	1.72 nm
Start - E	210.00° M	1.75 nm
A - B	284.00° M	1.76 nm
A - C	265.00° M	2.63 nm
A - D	242.00° M	3.14 nm
A - S	216.00° M	1.80 nm
B - A	104.00° M	1.76 nm
B - C	235.00° M	1.13 nm
B - D	210.00° M	2.17 nm
B - E	184.00° M	3.40 nm
B - S	161.00° M	2.00 nm
C - A	085.00° M	2.63 nm
C - B	055.00° M	1.13 nm
C - D	187.00° M	1.24 nm
C - E	166.00° M	2.83 nm
C - S	128.00° M	2.00 nm
D - A	062.00° M	3.14 nm
D - B	030.00° M	2.17 nm
D - C	007.00° M	1.24 nm
D - E	151.00° M	1.73 nm
D - S	090.00° M	1.72 nm
E - A	033.00° M	3.55 nm
E - B	004.00° M	3.40 nm
E - C	346.00° M	2.83 nm
E - D	331.00° M	1.73 nm
E - S	030.00° M	1.75 nm
A - Finish	205.00° M	1.66 nm
B - Finish	153.00° M	2.18 nm
C - Finish	124.00° M	2.31 nm
D - Finish	092.00° M	2.08 nm
E - Finish	040.00° M	2.10 nm

**A3.5 Configuration of Fixed Mark Courses**



**A3.6 MYC Tower – ‘Start’ and ‘Shorten Course Finish’ Transit Line**

The yellow line represents the Start line from the Tower and its extension.



# APPENDIX B

## HARBOUR OBSTRUCTION

