

Please be advised, the Royal Geelong Yacht Club requires a COVID double vaccination or a medical exemption for entry to the site.



MORNINGTON YACHT CLUB

FAMILY | FRIENDSHIP | SAILING



SPECIAL SAILING INSTRUCTIONS FOR KEELBOAT AND TRAILABLE YACHT DIVISIONS

GEELONG DESTINATION RACE

[Race to Royal Geelong Yacht Club (RGYC)]

SATURDAY 27th NOVEMBER 2021

Long Distance Race Series sponsored by



1.0 GENERAL

The race shall be governed by the current versions of the ***Racing Rules of Sailing*** (Rule/s), the Special Regulations of Australian Sailing (AS), the Mornington Yacht Club (MYC) Notice of Race (NOR) and Sailing Instructions (SI's) and these Special Sailing Instructions (SSI's).

2.0 ELIGIBILITY

All yachts shall comply with AS Special Regulations Part 1, Category 5 and the MYC NOR

3.0 ENTRIES and SAFETY

Race entry procedure will be in accordance with MYC SI's, Part 1 Clause 1.2 Entry and Clause 1.3 Safety.

4.0 RESULTS

Results will be calculated in accordance with M.Y.C. SI's, Part 1, Clauses 1.12 and 1.13

5.0 STARTING PROCEDURE

The starting procedure shall be two single light starts, one for Keelboat Division, the other for Trailable Yacht Division, as detailed in MYC SI's Part 3, Clauses 3.5, 3.6 & 3.7. All yachts shall start leaving the Start (S) mark to Starboard.

6.0 STARTING SEQUENCE/TIMES

Divisions	Warning Signal
Keelboat Division	0855 hrs.(Single Red Light)
Trailable Yacht Division	0900 hrs.(Single Green Light)

7.0 COURSE - (approx. 33.5nm) Charts required for plotting shall be current AUS 143 and AUS 157.

Start at Mornington, to MYC 'D' buoy (leave to Starboard) to the Prince George Beacon (leave to Port) to Grassy Pt. Marine Farm NE Buoy (leave to Port) to Grassy Pt. Marine Farm NW Buoy (leave to Port) to MYC Virtual Mark #1 (leave to Port) to MYC Virtual Mark #2 (leave to Starboard) to MYC Virtual Mark #3 (leave to Starboard) at this point enter the Hopetoun Channel (also refer to sub-clause 10.5) to MYC Virtual Mark #4 (leave to Port) to Finish at RGYC.

Please be advised, the Royal Geelong Yacht Club requires a COVID double vaccination or a medical exemption for entry to the site.

7.1 EXCLUSION ZONE

The Point Wilson Explosives Pier is surrounded by a total exclusion zone of 300 meters. *A fine of up to \$10,000 may be imposed for entry to this area, accidental or not. The area is under constant video surveillance and competitors must make themselves aware of the exact zone limits.*

7.2 MARKS OF THE COURSE –

MARKS (Approximate positions)	DESCRIPTION	LATITUDE	LONGITUDE
MYC 'D' buoy	Yellow pillar buoy.	38°12.17' S	144°59.78' E
Prince George Beacon	Red Lateral Beacon Fl.R.4s 8M	38° 06.40' S	144° 44.20' E
Grassy Pt. Marine Farm NE Buoy	Yellow Beacon Q(4) Y 12s 3nm	38° 06.03' S	144° 42.19' E
Grassy Pt. Marine Farm NW Buoy	Yellow Beacon Q(4) Y 12s 3nm	38° 06.00' S	144° 40.69' E
MYC Virtual Mark #1		38° 06.00' S	144° 35.00' E
MYC Virtual Mark #2		38° 07.00' S	144° 32.00' E
MYC Virtual Mark #3		38° 07.08' S	144° 27.00' E
MYC Virtual Mark #4		38° 07.32' S	144° 24.50' E

7.3 MARINE FARMS IN THE COURSE AREA

The attention of competitors is drawn to Marine Farms within the course area. These may be floating or fixed structures with associated moorings that shall be avoided. Buoys or beacons, that may be lit, generally mark these areas. All Marine Farms in the course area shall be an obstruction. The location of Marine Farms is shown on current charts AUS 143 and AUS 157.

8.0 THE FINISH

The finishing line will be between the North Cardinal Mark (Just North West of the RGYC Marina) on the Port end and the outer end of Cunningham Pier on the Starboard end. All boats shall record their own finishing time. Finishing times shall be reported to the MYC Tower only by telephone (03 5975 6805) at the first reasonable opportunity after finishing or by SMS to 0407 834 634 viz. 'Boat Name + Finishing Time hh:mm:ss'. After finishing please keep clear of RGYC boats using this finishing line for other races. (Also see Appendix A)

9.0 AVOIDANCE OF COMMERCIAL SHIPPING IN PORT PHILLIP AND CORIOBAY

In Port Phillip and Corio Bay, Commercial Shipping has right of way over pleasure craft. Professional fishing vessels engaged in fishing are, for the purpose of these Sailing Instructions, considered as commercial ships. All yachts shall keep clear of shipping in all Port Waters in accordance with Sections 2, 5.6 & 5.7 of the Harbour Master's Directions May 2019. Any yacht that, in the opinion of the Race Committee, causes justifiable concern to a commercial ship shall be subject to disqualification by protest and may attract civil action.

10.0 SAFETY & COMMUNICATIONS

10.1 Personal Floatation Devices

The attention of competitors is drawn to the provisions of the Marine Act and Boating Regulations regarding the wearing of Personal Floatation Devices.

10.2 Radio Watch The Communication Channel for this race shall be VHF Ch. 73

Please be advised, the Royal Geelong Yacht Club requires a COVID double vaccination or a medical exemption for entry to the site.

10.2.1 The Club: A listening watch will be kept at the clubhouse on the Communication Channel and V.H.F. Ch. 12 & 16 The Club call sign is VZV 999. The MYC Tower/Race Office telephone, for use only if radio contact fails, is 03 5975 6805.

10.2.2 The Competitor: A boat shall conduct a radio check by calling the MYC Tower, no later than 5 minutes prior to her Warning Signal on the Communication Channel and then keep a listening watch on the Communication Channel and VHF Ch. 12 at all times during the race. The Club may during the course of the race advise competitors of conditions that may adversely affect their safety.

10.3 Radio Schedules All boats shall call the MYC Tower on the Communication Channel at the first reasonable opportunity after rounding the Prince George Beacon. MYC Virtual Mark #1 and shall also contact RGYC, on VHF Ch. 71, (call sign RG Starters Box) immediately after passing MYC Virtual Mark #4. Boats shall use the services of another boat to relay a report in adverse signal conditions, the co-operation of all boats in these circumstances is imperative. VHF Ch. 16 shall not to be used for position reporting.

10.3.1 A boat having tried to report by radio, including a relay via another boat and failed shall telephone the MYC Tower (03 5975 6805) to report.

10.3.2 The scheduled marks of the course for reporting shall be:

Prince George Beacon

MYC Virtual Mark #1

MYC Virtual Mark #4

10.4 Radio Reporting

All boats shall report to the MYC Tower any observed significant circumstances that may adversely affect the safety of any competitors in the race. E.g. *such items as sudden increases in wind strength over 25kts and/or increased sea state; a man overboard situation, including that of another boat; flotsam that may be hazardous to boats, etc., etc.* All boats retiring from the race shall advise MYC Tower immediately after making that decision.

Attention is also drawn to the Radio Reporting requirements of Clause 12, Time Limit.

10.5 Hopetoun Channel Warning

The attention of competitors is drawn to areas of very shallow water adjacent to the Hopetoun Channel. Boats shall sail only in the channel between Hopetoun Channel #1 and #2 Beacons (the gate) through to Hopetoun Channel #7 and #8 Beacons.

10.6 Signing Off

Boats shall **Sign Off once safely berthed at the RGYC marina** by advising the MYC Tower that the boat is safely moored, either by VHF Ch.73 radio or telephone 03 5975 6805. **Boats returning to Mornington shall immediately after finishing the race Sign Off** by advising the Tower (VHF radio Ch. 73 or Telephone 03 5975 6805) of their intentions, when after racing they leave the course area, prior to heading home.

11 Penalties

11.1 A boat failing to conduct a radio check prior to her Warning Signal shall not be considered a starter and shall be scored Did Not Start (DNS) without a hearing. *This amends RRS 63.1, A4 & A5*

11.2 A boat failing to report to the Tower at the scheduled mark/s of the course shall be scored Did Not Finish (DNF) without a hearing. *This amends RRS 63.1, A4 & A5*

Please be advised, the Royal Geelong Yacht Club requires a COVID double vaccination or a medical exemption for entry to the site.

11.3 A boat failing to meet her sign off obligation as set out in sub-clause 10.6 shall be scored her place plus three points without a hearing, but shall not be scored more than the score of the last boat that finishes in her division. *This amends Rules 63.1, A4 and A5*

12.0 TIME LIMIT

12.1 The time limit shall be sunset (20:23 EDT) for all boats. Boats failing to Finish within the time limit will be scored a "Did not Finish" (DNF) without a hearing. *This amends RRS 35, A4 & A5*

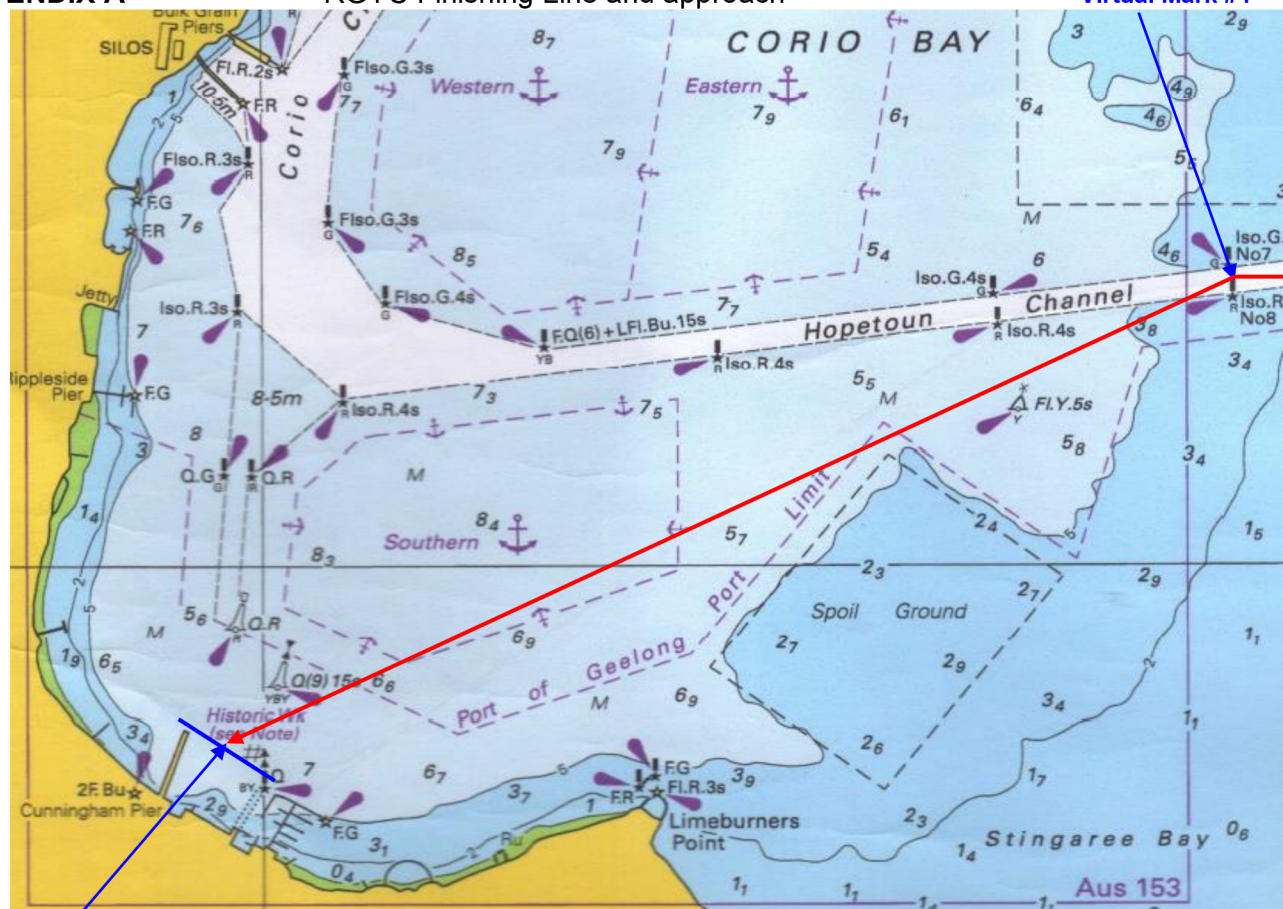
12.2 All boats expecting to finish at RGYC later than 1800 hours, for safety reasons shall contact MYC Tower by radio before 1745 hrs. and advise their current position and ETA at RGYC. Boats shall comply with the provisions of Cl. 10.3.1 to complete this task. After 1800 hrs a listening watch will only be kept until such times as the Race Officer deems that all boats are safe. Boats finishing later than 1800 hrs and cannot contact MYC Tower to record their finish and/or Sign Off shall call 0407 834 634.

Bill Bennett

Rear Commodore

12th November 2021

APPENDIX A RGYC Finishing Line and approach



RGYC Finishing Line

NOT TO SCALE