



## **2023/24 Victorian Trailable Yacht and Sports Boat Championships**

Incorporating the following class titles:

**National Noelex Championships**

**Castle Yacht Owners Association of Victoria Championships**

Conducted by:

**Gippsland Lakes Yacht Club**

On behalf of

**Victorian Trailable Yacht Division of Australian Sailing**

### **NOTICE OF RACE (NOR)**

**Saturday 24th and Sunday 25th of February 2024**

#### **1. RULES**

- 1.1. The regatta will be governed by the rules as defined in The Racing Rules of Sailing 2021-24 and Australian Sailing (AS) Special Regulations (SR) Part 1 for Racing Boats, the Australian Trailable Yacht and Sports Boat Rule (ATYSBR) and the relevant class rules, except as any of these are altered by the Sailing Instructions.
- 1.2. AS SR Category 6 shall apply PLUS an engine shall be carried at all times in conformity with the requirements of the YA SR Part 1 - 2.01.6 Category 5 and 3.24.3 and 3.24.5 Propulsion.
- 1.3. Keels shall always be locked down while racing.
- 1.4. Boats shall not race with anchors protruding over any part of the boat gunwale.

#### **2. SAILING INSTRUCTIONS**

- 2.1. The supplementary sailing instructions will be available not later than 10:00pm on February 19, 2024 on the GLYC website ([www.sailglyc.com](http://www.sailglyc.com))

#### **3. COMMUNICATION**

- 3.1. All boats shall carry a VHF radio capable of communicating.
- 3.2. On the water, the race committee may make courtesy broadcasts to competitors on VHF radio. The channel will be stated in the SIs.
- 3.3. From the first warning signal until the end of the last race of the day, except in an emergency, a boat shall not make voice or data transmissions and shall not receive voice or data communication that is not available to all boats.

#### **4. ELIGIBILITY AND ENTRY**

- 4.1. The event is open to all boats complying with the definition of a "Trailable Boat" in AS SR Part 1.
- 4.2. The 2019 CBH handicapping system applies. Where boats do not have a listed CBH the Organising Authority reserves the right to allocate a provisional CBH

4.3. Indicative divisional splits are defined as follows:

Division	CBH Range
Division 1	CBH 0.770 and above
Division 2	CBH 0.700 – 0.769
Division 3	CBH 0.699 and below
Division 4	Non-Spinnaker (All CBH)

4.4. Boats may enter the event by registering online before 20:00 Friday 16<sup>th</sup> February 2024 at <https://www.trybooking.com/CNTGN>

4.5. Late entries will be accepted up until the end of registration with a late entry fee.

## 5. FEES

5.1. Entry fee payable online is \$90. Late will incur an additional \$30 fee.

## 6. ADVERTISING

6.1. Boats may be required to display advertising chosen and supplied by the organising authority.

## 7. SCHEDULE

7.1. Registration at GLYC:

Date	From	To
Saturday 24 Feb 2024	10:00	11:45

7.2. Competitor Briefing at GLYC:

Date	From	To
Saturday 23 Feb 2024	11:45	12:00

7.3. Dates of racing:

Date	First warning signal not before	Last warning signal not after
Saturday 23 Feb 2024	12:55	16:55
Sunday 24 Feb 2024	9:25	12:25

## 8. EQUIPMENT INSPECTION

8.1. Boats may be inspected at any time.

## 9. VENUE

9.1. NoR Appendix A and B show the event venue.

## **10. COURSES**

- 10.1. Saturday will be short passage style racing around laid marks, as per the sailing instructions.
- 10.2. Sunday will be windward-leeward courses around laid marks, as per the Sailing Instructions.

## **11. SCORING**

- 11.1. Three (3) races are required to be completed to constitute a series.
- 11.2. A boat's series score shall be the total of her race scores excluding her worst score.
- 11.3. When fewer than five (5) races have been completed, a boat's series score will be the total of her race scores.

## **12. RISK STATEMENT**

- 12.1. RRS 3 states: 'The responsibility for a boat's decision to participate in a race or to continue to race is her's alone.' By participating in this event each competitor agrees and acknowledges that sailing is a potentially dangerous activity with inherent risks. These risks include strong winds and rough seas, sudden changes in weather, failure of equipment, boat handling errors, poor seamanship by other boats, loss of balance on an unstable platform and fatigue resulting in increased risk of injury. Inherent in the sport of sailing is the risk of permanent, catastrophic injury or death by drowning, trauma, hypothermia or other causes.
- 12.2. The Organising Authority, and the host club, their officers, members, servants and agents accept no responsibility in respect of loss of life, personal injury or loss or damage to property which may be sustained by reason of their participation or intended participation in this Event or howsoever arising in connection with this Event.

## **13. INSURANCE**

- 13.1. Each participating boat shall be insured with valid third-party liability insurance with a minimum cover of \$10,000,000 AUD per incident or the equivalent.

## **14. PRIZES**

- 14.1. Prizes made up of trophies will be awarded to 1st, 2nd and 3rd calculated on CBH for each Division and 1st overall, 2023 Victorian Trailable Yacht Champion.
- 14.2. Class Association trophies and other division prizes may be awarded subject to number of entries.

## **15. FURTHER INFORMATION**

- 15.1. There are multiple boat ramps in Paynesville suitable for launching trailable yachts see Appendix B for markup of boat ramp locations. King Street ramp is the largest facility.
- 15.2. Saturday night berthing is freely available at public berthing in Paynesville and on Raymond Island.
- 15.3. A simple, social Saturday night dinner (pizza or similar) will be available at Gippsland Lakes Yacht Club and participants are encouraged to enjoy the hospitality of GLYC.
- 15.4. This event is one of the events included in the Victorian Trailable Yacht Travellers Series.

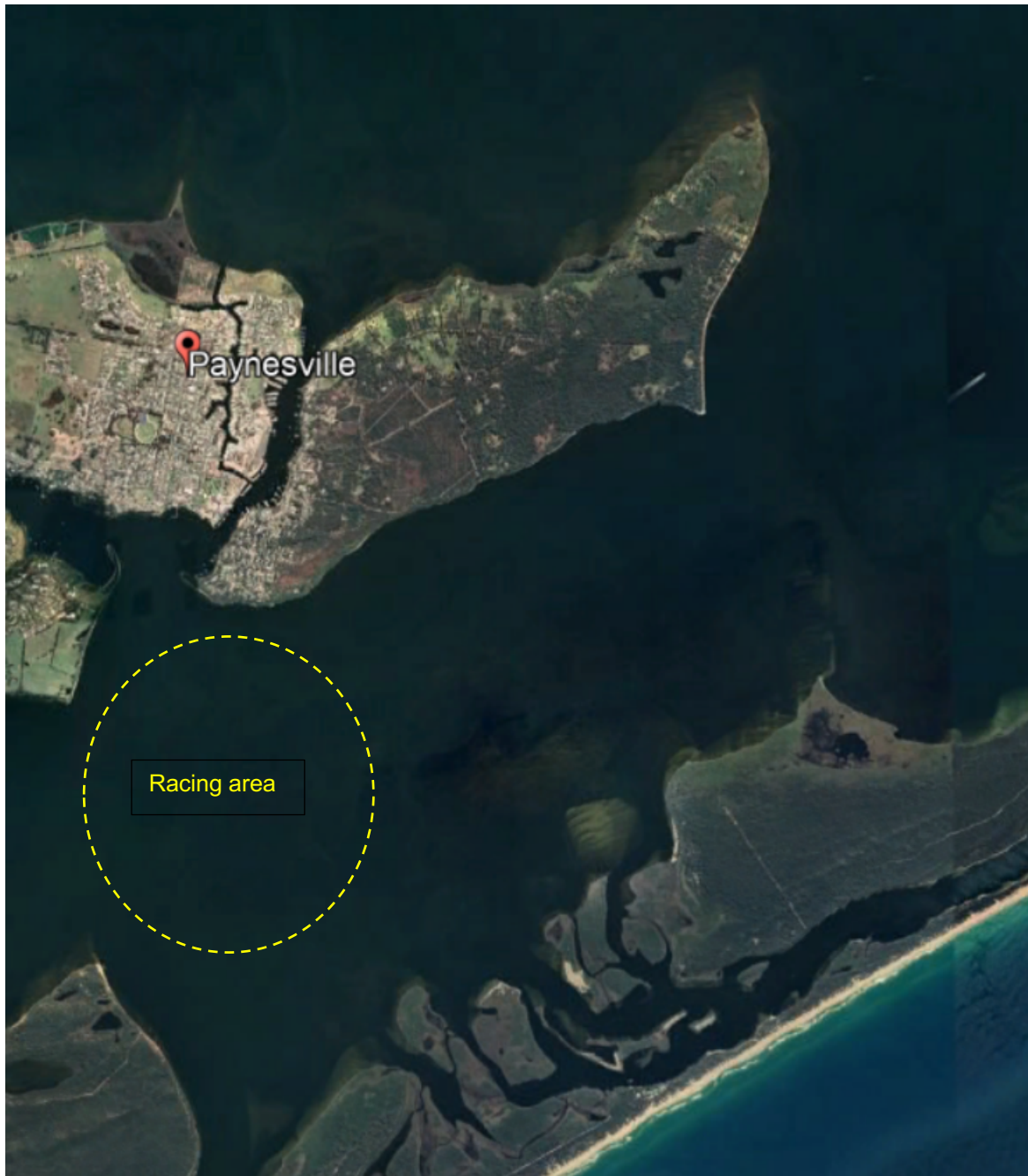
Victorian Trailable Yacht Division Website: <https://www.trailableyacht.com.au/home/>

GLYC Website: [sailglyc.com](http://sailglyc.com)

For further information please contact Victorian Trailable Yacht Division Event Coordinator:

Mitch Bayliss, 0401 854 571, [Mitchell\\_bayliss@hotmail.com](mailto:Mitchell_bayliss@hotmail.com)

## Appendix A – Paynesville and Racing Area



## Appendix B – Boat Ramps and Car/Trailer Parking

